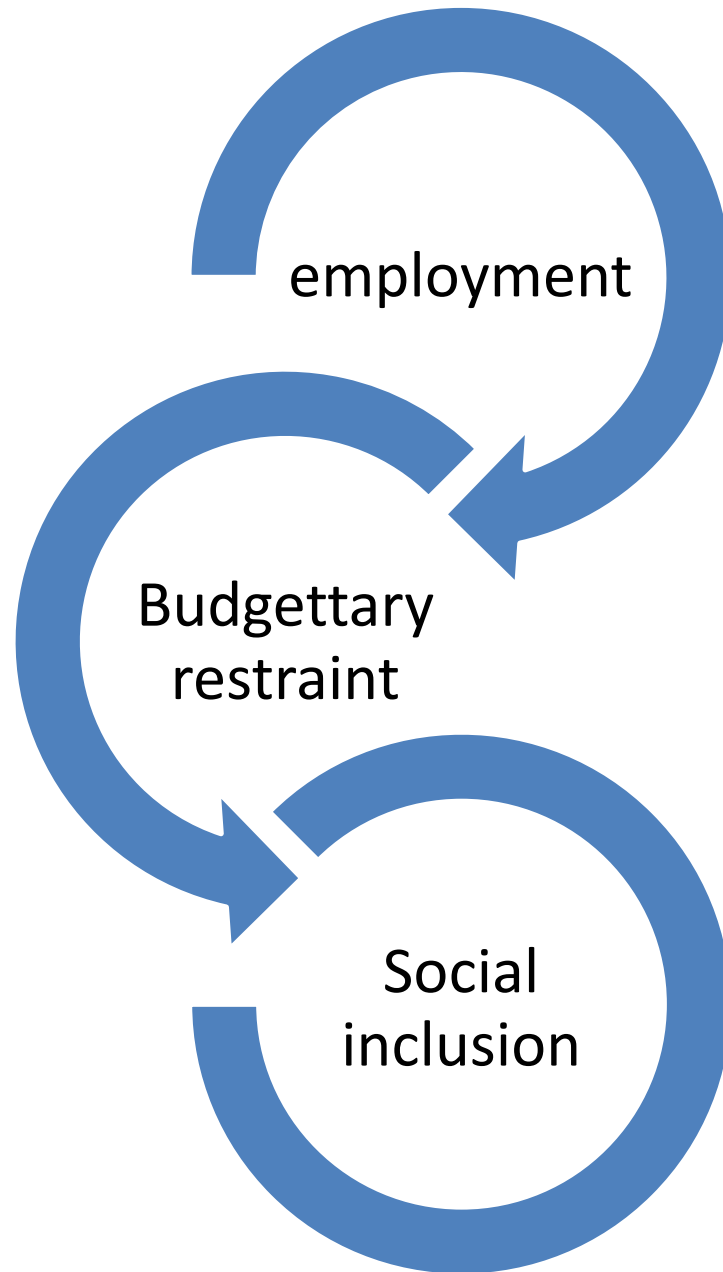


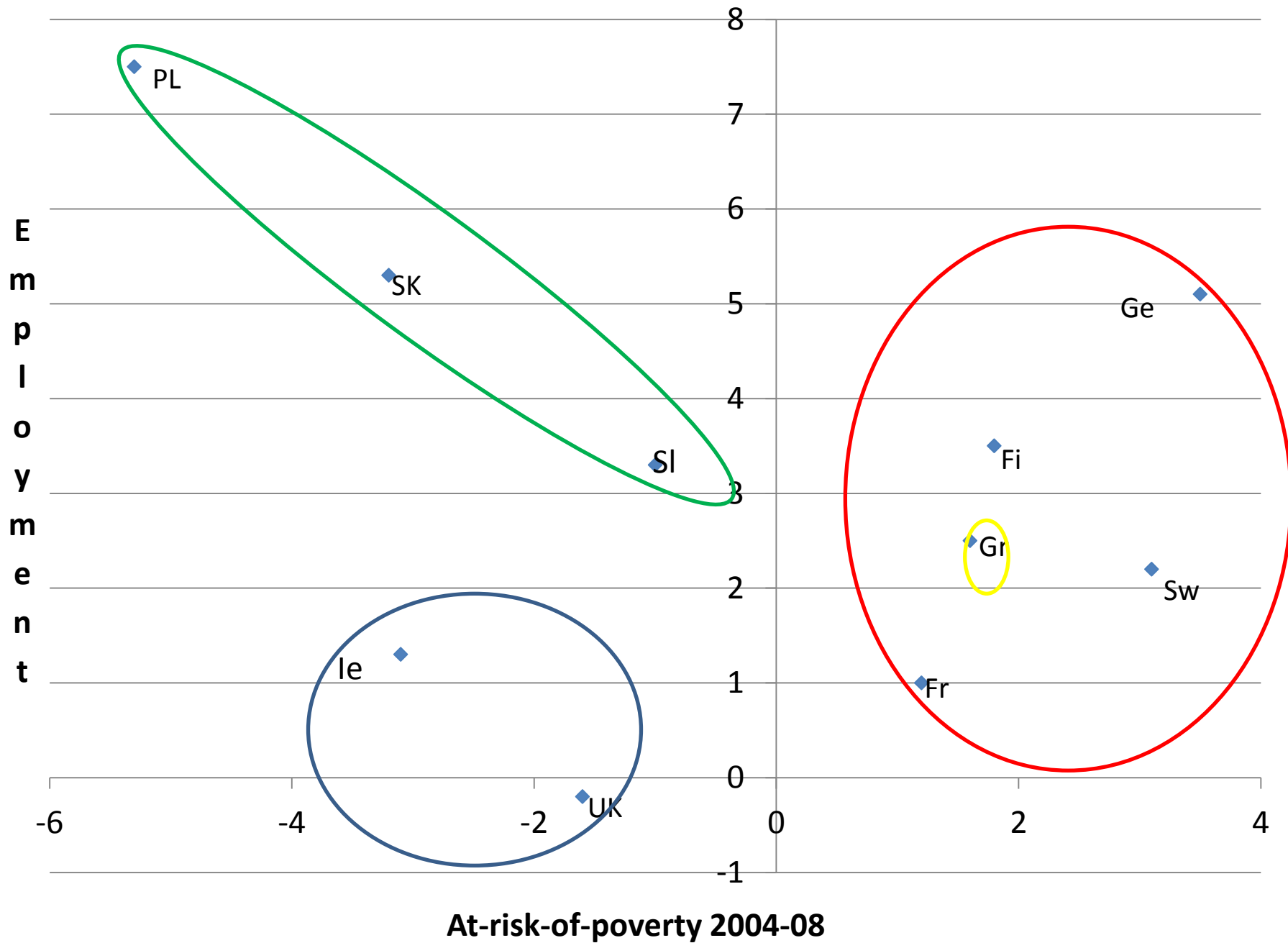
# Household work intensity and the adequacy of social protection in the EU

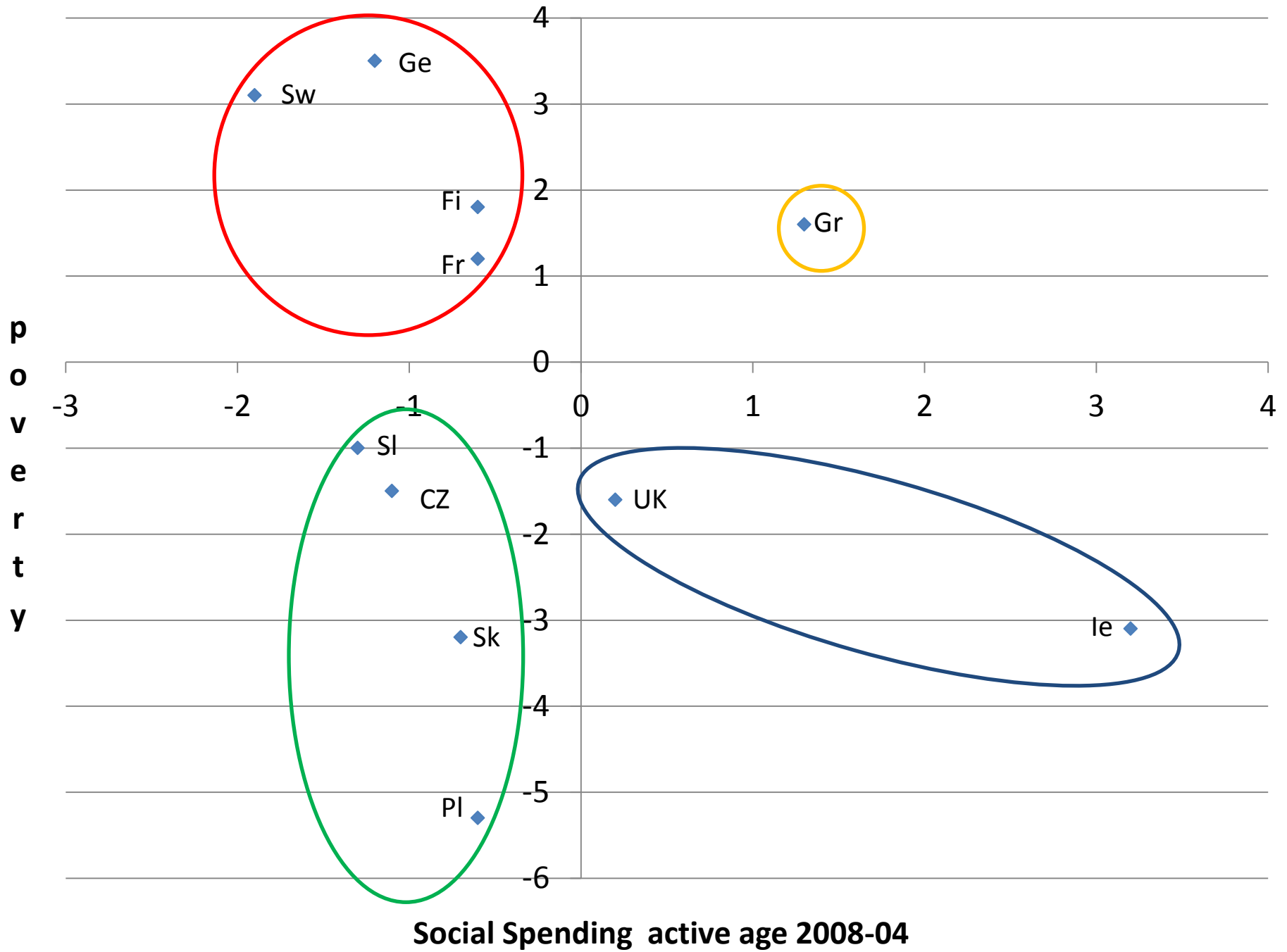
Bea Cantillon

11.12.2012

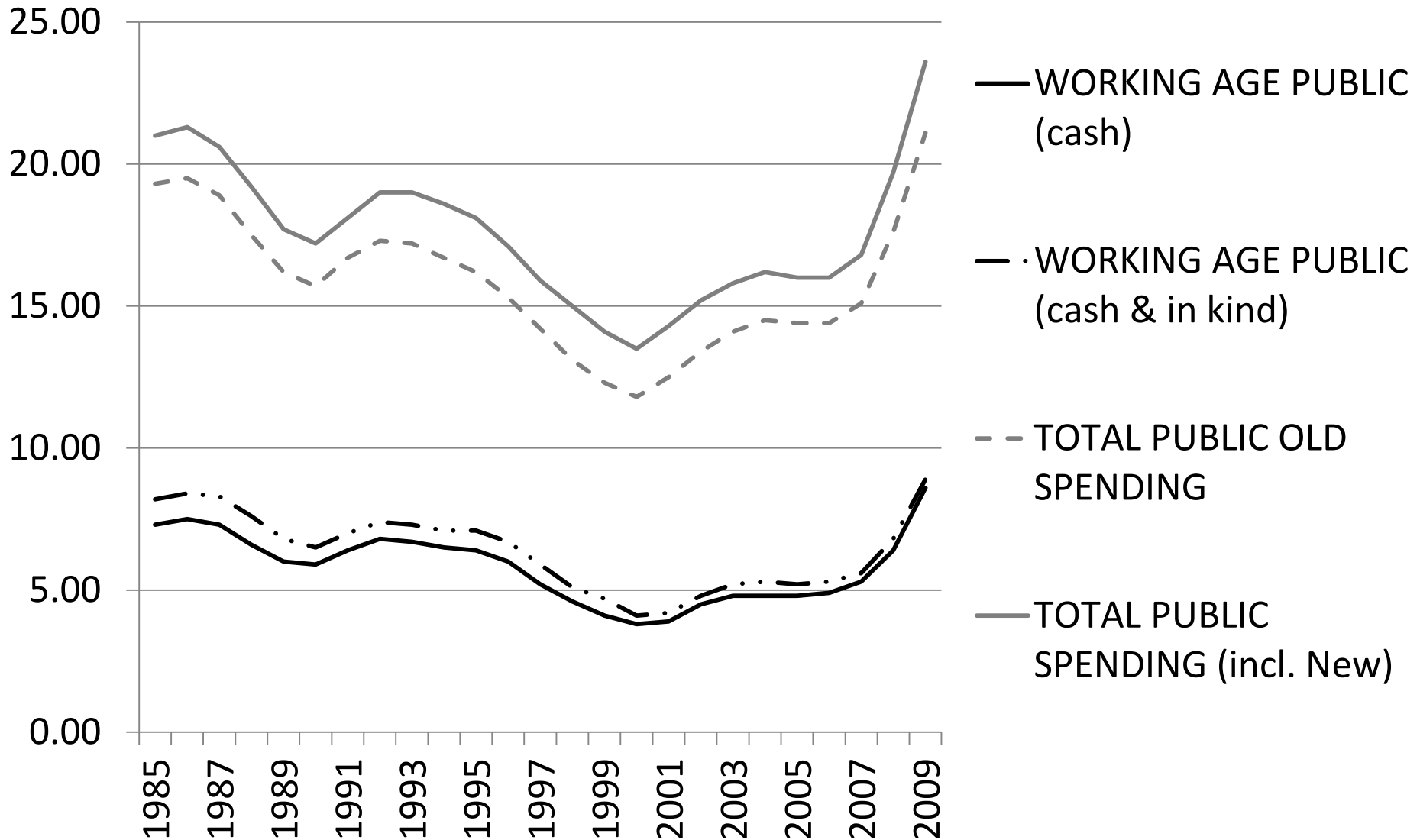
- The Lisbon strategy : eradication of poverty and the virtuous circles of growth, employment and social inclusion
- Focus on changes and trajectories
- In the good years before the crisis
- Working age population



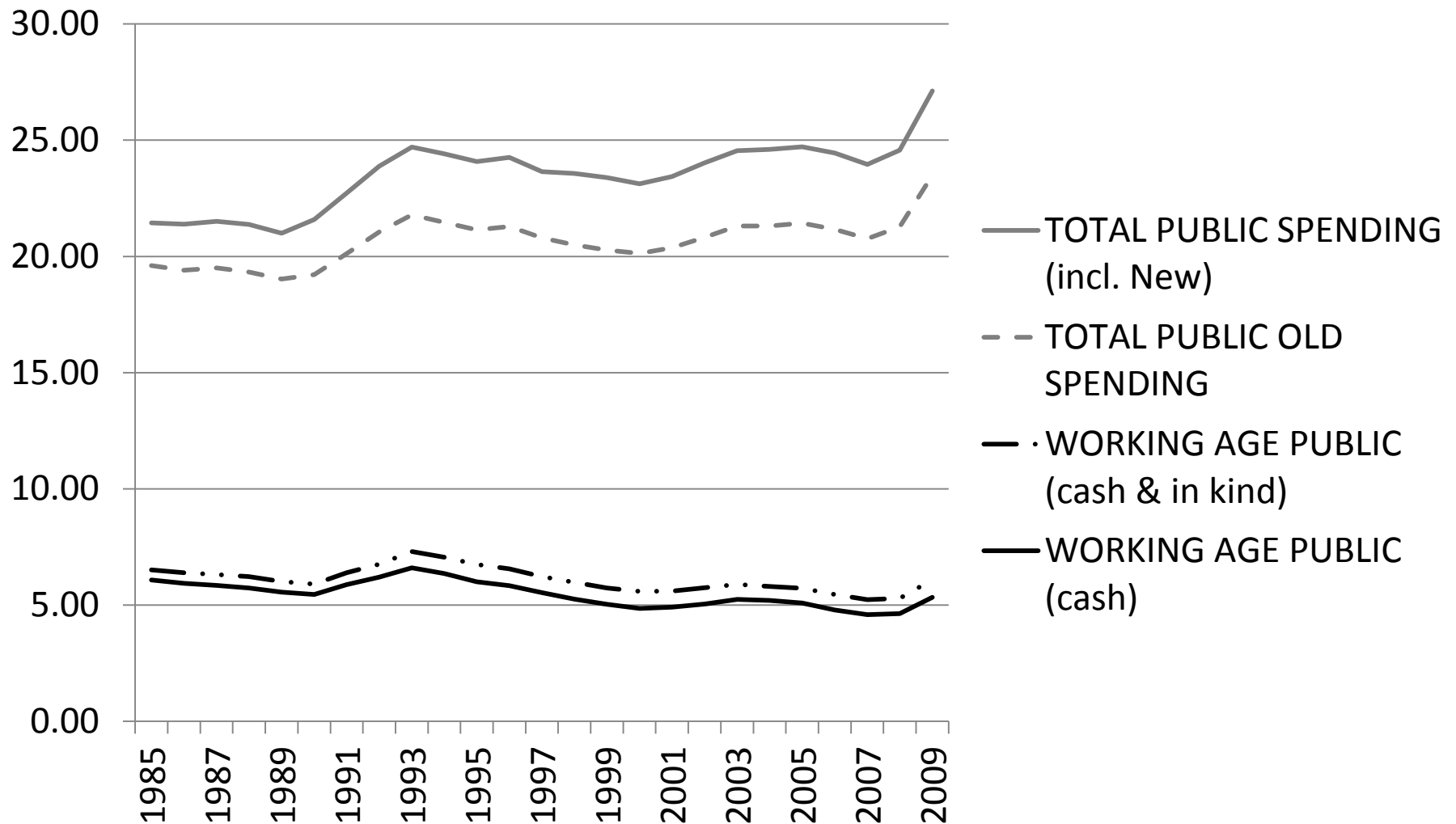




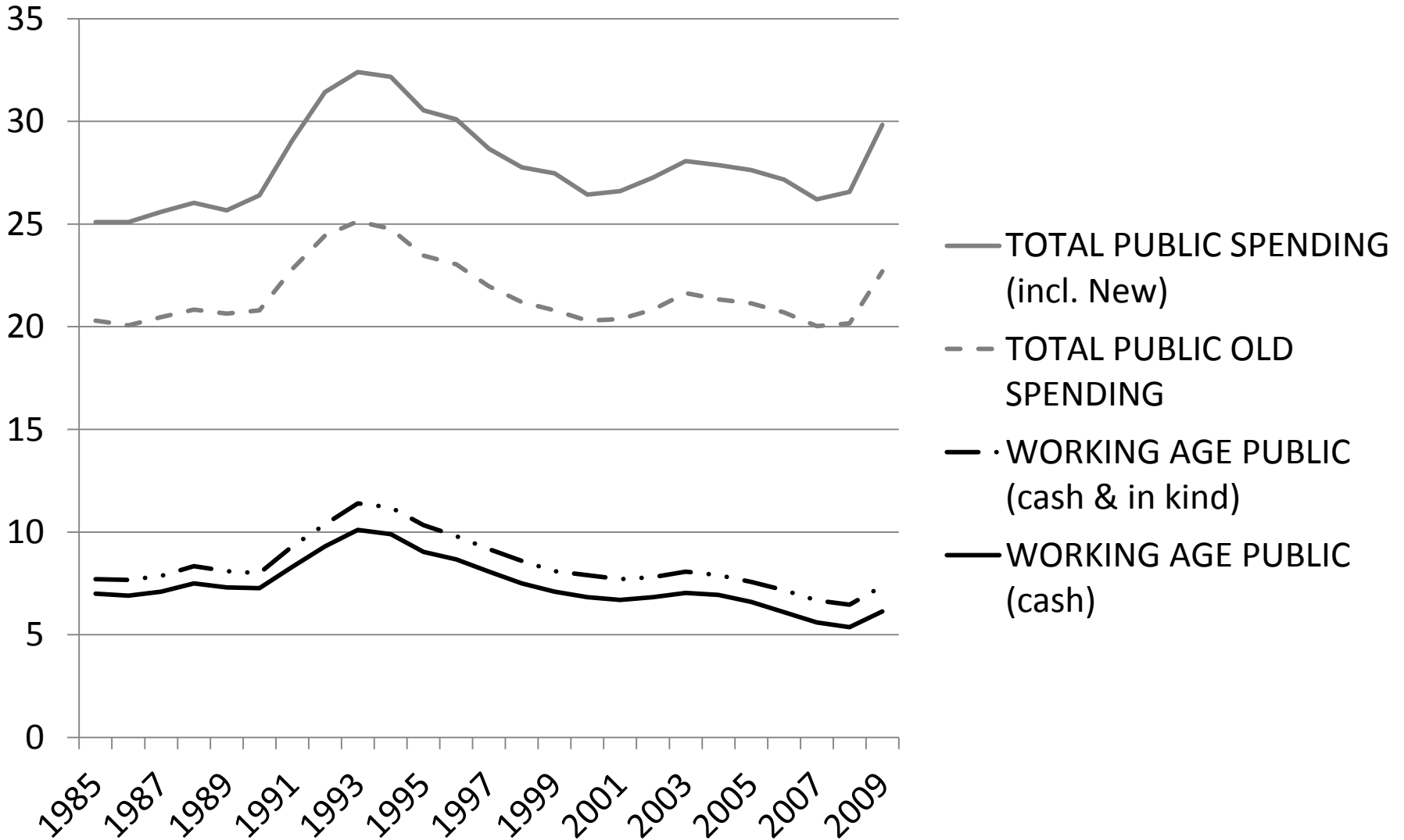
# Total social spending (public), % GDP, Ireland, OECD SOCX



**Figure 10-1a. Total social spending (public), % GDP unweighted average EU13 (AT, IE excl.), OECD SOCX.**

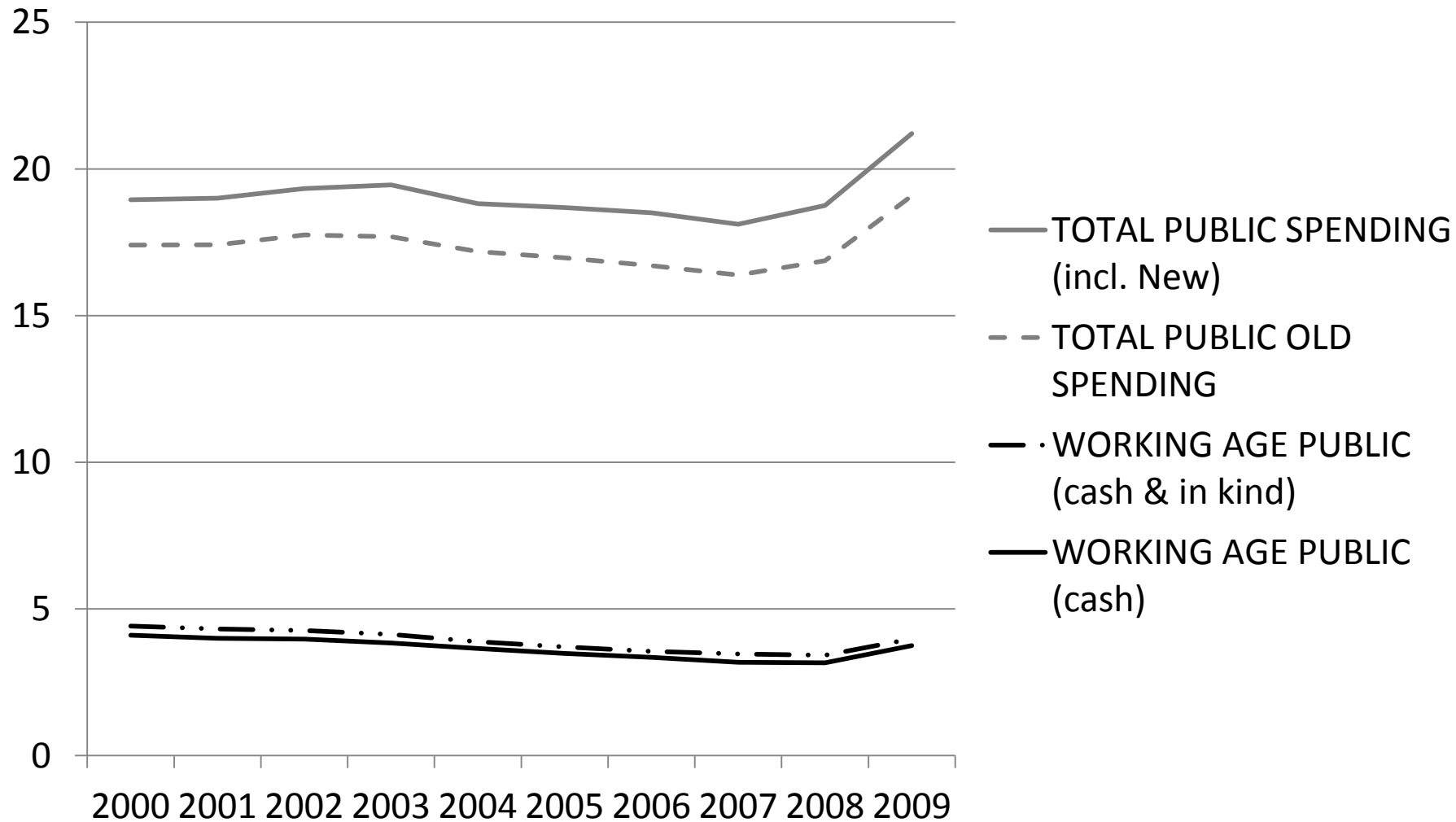


**Figure 10-1b. Total social spending (public), % GDP  
unweighted average FI, SE, DK, OECD SOCX**





**Figure 10-1e. Total social spending (public), % GDP  
unweighted average CZ, EE, HU, PL, SK, SI, OECD SOCX**



- New MS : employment+, spending-, poverty-
- Scandinevean : employ+,spending-, poverty+
- Ireland : employ+, spending+, poverty -

Which hindrances in the virtuous circles and what contributed to the success in (most of) the new MS?

- Who benefited from job growth?
- How did poverty evolve among the working poor?
- And In-work-poverty ?
- Did the adequacy of social protection increase?

- Who benefited from job growth?

	<b>actual change</b>	<u>total predicted change</u>	of which: predicted change (unconditional)		<u>total polarization change</u>	of which: polarization	
			<i>due to <math>\Delta</math> non-employment</i>	<i>due to <math>\Delta</math> household shares</i>		<i>between households</i>	<i>within households</i>
<b>bg</b>	-6.05	-4.50	-6.48	1.98	-1.55	0.05	-1.60
<b>ee</b>	-4.51	-3.62	-4.70	1.09	-0.89	0.24	-1.14
<b>pl</b>	-3.56	-3.17	-3.51	0.34	-0.39	0.10	-0.49
<b>sk</b>	-2.71	-2.43	-2.80	0.38	-0.29	0.11	-0.39
<b>cz</b>	-1.67	-0.58	-1.57	0.99	-1.09	0.37	-1.46
<b>uk</b>	-1.01	-0.66	-0.96	0.31	-0.35	0.19	-0.54
<b>lv</b>	-3.82	-2.07	-0.94	-1.12	-1.76	0.01	-1.77
<b>si</b>	-2.50	-1.80	-1.61	-0.19	-0.70	-0.06	-0.64
<b>hu</b>	-1.09	-0.55	-0.54	0.00	-0.54	0.01	-0.56
<b>it</b>	-2.07	-2.93	-3.97	1.04	0.86	-0.25	1.11
<b>gr</b>	-2.00	-2.20	-3.06	0.86	0.20	0.04	0.16
<b>cy</b>	-1.50	-2.08	-2.22	0.13	0.58	0.14	0.44
<b>nl</b>	-1.39	-1.79	-2.21	0.42	0.40	0.16	0.24
<b>es</b>	-1.04	-2.83	-3.60	0.77	1.79	-0.03	1.82
<b>at</b>	-0.71	-1.06	-1.54	0.48	0.35	0.10	0.25
<b>fr</b>	-0.58	-1.37	-2.01	0.64	0.80	0.08	0.72
<b>lt</b>	-0.43	-1.57	-3.29	1.73	1.14	0.50	0.64
<b>be</b>	-0.35	-0.71	-1.17	0.45	0.36	0.22	0.14
<b>pt</b>	0.64	0.43	0.19	0.24	0.20	0.11	0.10
<b>ro</b>	1.83	1.46	1.86	-0.40	0.38	0.04	0.34
<b>de</b>	0.25	-0.46	-1.10	0.63	0.72	0.09	0.63
<b>ie</b>	0.57	-0.80	-0.92	0.12	1.37	0.03	1.34
<b>lu</b>	1.10	-0.55	-1.27	0.72	1.66	-0.13	1.79

- Who benefits from job growth?
- What about poverty among the working poor?
- And what about in-work-poverty?

# Which hindrances in the virtuous circles?

- Who benefited from job growth?
- Poverty among the working poor
- In-work-poverty
- Poverty reduction by social transfers

	$\Delta\text{preAROP}_{\text{pre}}$	$\Delta\text{poverty reduction}$ (absolute)	Effect $\Delta\text{size}$	Effect $\Delta\text{efficiency}$	$\Delta\text{AROP}_{\text{post}}$		
AT	0.64	0.59	-0.64	0.05	0.05		
BE	-1.20	-1.29	1.15	0.14	-0.09		
BG			0.00	0.00			
CY	-0.49	-0.52	0.23	0.29	0.04		
CZ	-1.95	-0.35	-0.03	0.38	-1.60	**	
DE	1.21	-2.06	***	0.55	1.51	3.28	***
DE SOEP	-0.04	0.31		0.37	-0.06	-0.35	
DK	-1.43	-1.40		1.59	-0.19	-0.03	
EE	-2.80	-0.79	***	0.75	0.04	-2.01	***
ES	0.41	0.20		-0.10	-0.10	0.21	
FI	-1.53	-2.71	***	1.94	0.76	1.17	***
FR	-0.18	-0.64		-0.27	0.91	0.46	
GR	1.98	0.16		-0.23	0.07	1.83	**
HU	0.83	2.42	***	-1.51	-0.91	-1.59	***
IE	4.44	6.55	***	-3.80	-2.75	-2.11	***
IT	0.46	0.39		-0.07	-0.32	0.08	
LT	-1.48	1.43	***	-1.06	-0.37	-2.92	***
LU	1.86	1.00		0.20	-1.20	0.86	
LV	-0.86	-1.80	***	-0.62	2.42	0.95	
NL	-3.03	-2.18		2.21	-0.03	-0.84	
PL	-6.55	-1.91		2.72	-0.81	-4.64	***
PT	0.58	0.50		0.29	-0.79	0.08	
RO				0.00	0.00		
SE	-0.56	-2.87	***	1.62	1.24	2.31	***
SI	-2.21	-1.82		0.97	0.85	-0.39	
SK	-5.09	-1.58		2.76	-1.18	-3.51	***
UK	-1.69	-0.45		1.05	-0.60	-1.24	**



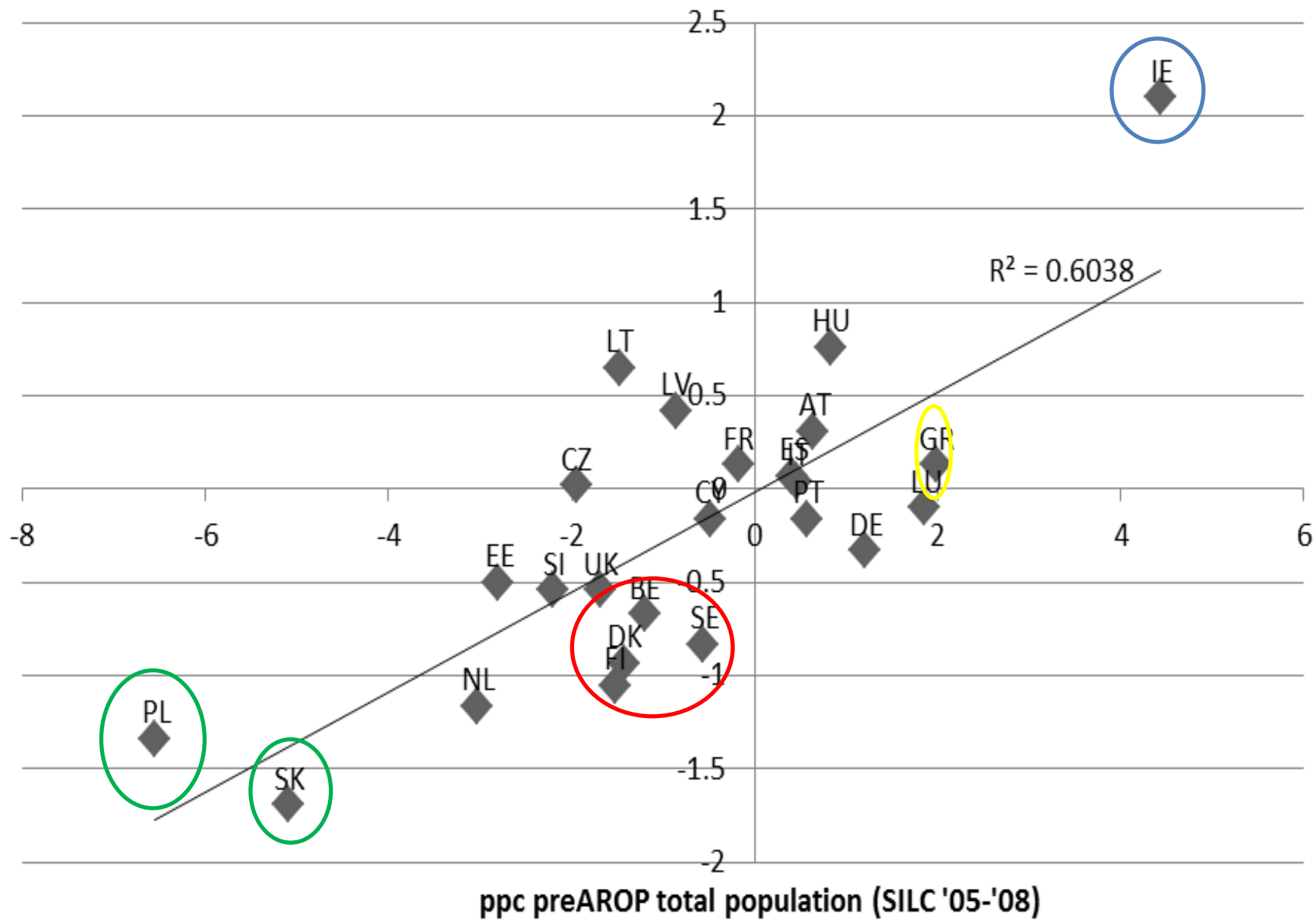
	$\Delta\text{preAROP}_{\text{pre}}$		$\Delta\text{poverty reduction}$ (absolute)		Effect $\Delta\text{size}$	Effect $\Delta\text{efficiency}$	$\Delta\text{AROP}_{\text{post}}$	
AT	0.64		0.59		-0.64	0.05	0.05	
BE	-1.20		-1.29		1.15	0.14	-0.09	
BG					0.00	0.00		
CY	-0.49		-0.52		0.23	0.29	0.04	
CZ	-1.95	**	-0.35		-0.03	0.38	-1.60	**
DE	1.21	**	-2.06	***	0.55	1.51	3.28	***
DE SOEP	-0.04		0.31		0.37	-0.06	-0.35	
DK	-1.43		-1.40		1.59	-0.19	-0.03	
EE	-2.80	***	-0.79		0.75	0.04	-2.01	***
ES	0.41		0.20		-0.10	-0.10	0.21	
FI	-1.53	**	-2.71	***	1.94	0.76	1.17	***
FR	-0.18		-0.64		-0.27	0.91	0.46	
GR	1.98	**	0.16		-0.23	0.07	1.83	**
HU	0.83		2.42	***	-1.51	-0.91	-1.59	***
IE	4.44	***	6.55	***	-3.80	-2.75	-2.11	***
IT	0.46		0.39		-0.07	-0.32	0.08	
LT	-1.48		1.43	***	-1.06	-0.37	-2.92	***
LU	1.86		1.00		0.20	-1.20	0.86	
LV	-0.86		-1.80	***	-0.62	2.42	0.95	
NL	-3.03	***	-2.18		2.21	-0.03	-0.84	
PL	-6.55	***	-1.91		2.72	-0.81	-4.64	***
PT	0.58		0.50		0.29	-0.79	0.08	
RO					0.00	0.00		
SE	-0.56		-2.87	***	1.62	1.24	2.31	***
SI	-2.21	***	-1.82		0.97	0.85	-0.39	
SK	-5.09	***	-1.58		2.76	-1.18	-3.51	***
UK	-1.69		-0.45		1.05	-0.60	-1.24	**

	$\Delta\text{preAROP}_{\text{pre}}$		$\Delta\text{poverty reduction}$ (absolute)		Effect $\Delta\text{size}$	Effect $\Delta\text{efficiency}$	$\Delta\text{AROP}_{\text{post}}$	
AT	0.64		0.59		-0.64	0.05	0.05	
BE	-1.20		-1.29		1.15	0.14	-0.09	
BG					0.00	0.00		
CY	-0.49		-0.52		0.23	0.29	0.04	
CZ	-1.95	**	-0.35		-0.03	0.38	-1.60	**
DE	1.21	**	-2.06	***	0.55	1.51	3.28	***
DE SOEP	-0.04		0.31		0.37	-0.06	-0.35	
DK	-1.43		-1.40		1.59	-0.19	-0.03	
EE	-2.80	***	-0.79		0.75	0.04	-2.01	***
ES	0.41		0.20		-0.10	-0.10	0.21	
FI	-1.53	**	-2.71	***	1.94	0.76	1.17	***
FR	-0.18		-0.64		-0.27	0.91	0.46	
GR	1.98	**	0.16		-0.23	0.07	1.83	**
HU	0.83		2.42	***	-1.51	-0.91	-1.59	***
IE	4.44	***	6.55	***	-3.80	-2.75	-2.11	***
IT	0.46		0.39		-0.07	-0.32	0.08	
LT	-1.48		1.43	***	-1.06	-0.37	-2.92	***
LU	1.86		1.00		0.20	-1.20	0.86	
LV	-0.86		-1.80	***	-0.62	2.42	0.95	
NL	-3.03	***	-2.18		2.21	-0.03	-0.84	
PL	-6.55	***	-1.91		2.72	-0.81	-4.64	***
PT	0.58		0.50		0.29	-0.79	0.08	
RO					0.00	0.00		
SE	-0.56		-2.87	***	1.62	1.24	2.31	***
SI	-2.21	***	-1.82		0.97	0.85	-0.39	
SK	-5.09	***	-1.58		2.76	-1.18	-3.51	***
UK	-1.69		-0.45		1.05	-0.60	-1.24	**

# Which hindrances in the virtuous circles?

- Who benefits from job growth?
- Poverty among the working poor
- In-work-poverty
- Poverty reduction by social transfers
  - effort
  - efficiency

ppc size total population (SILC '05-'08)



ppc preAROP total population (SILC '05-'08)

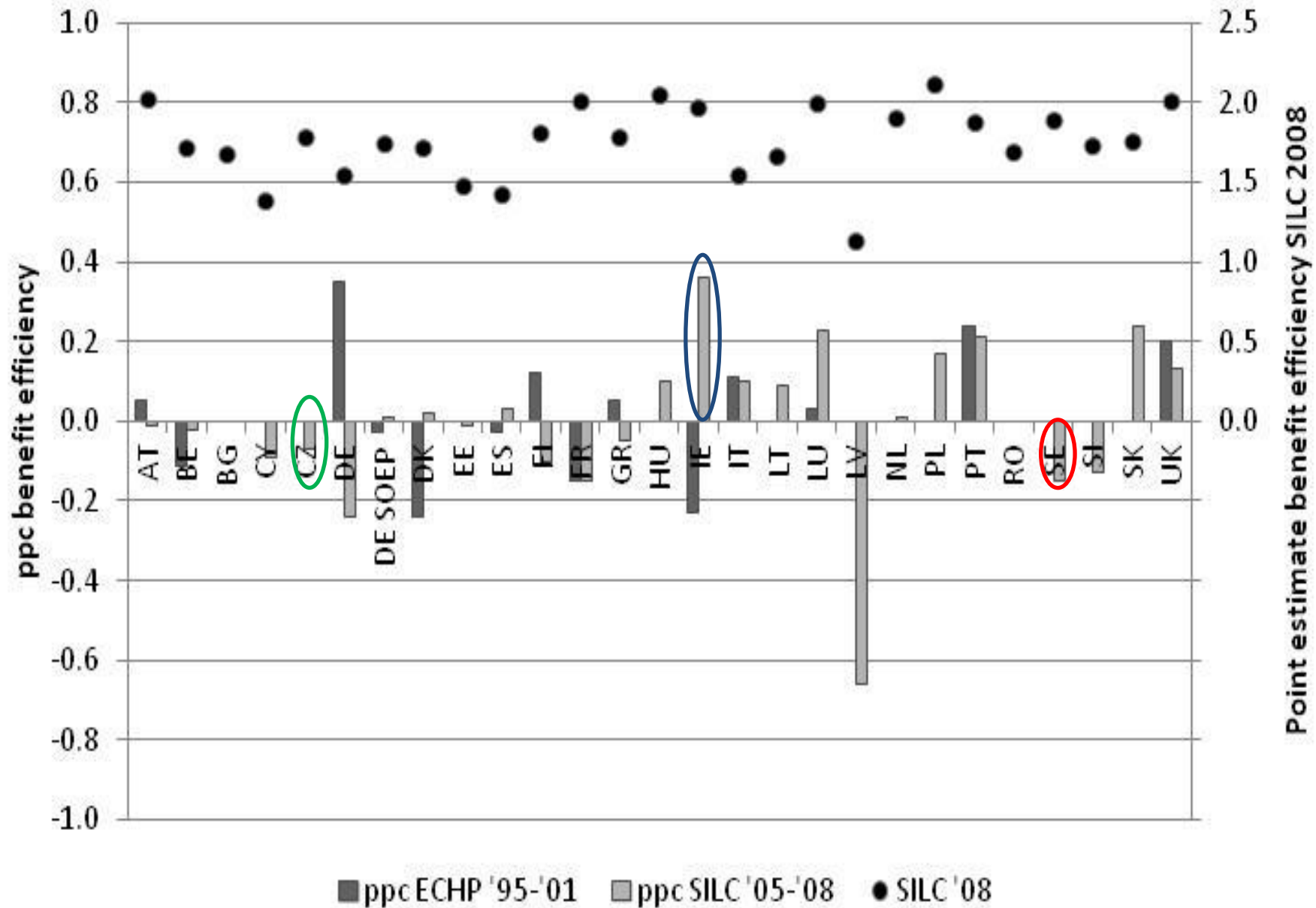
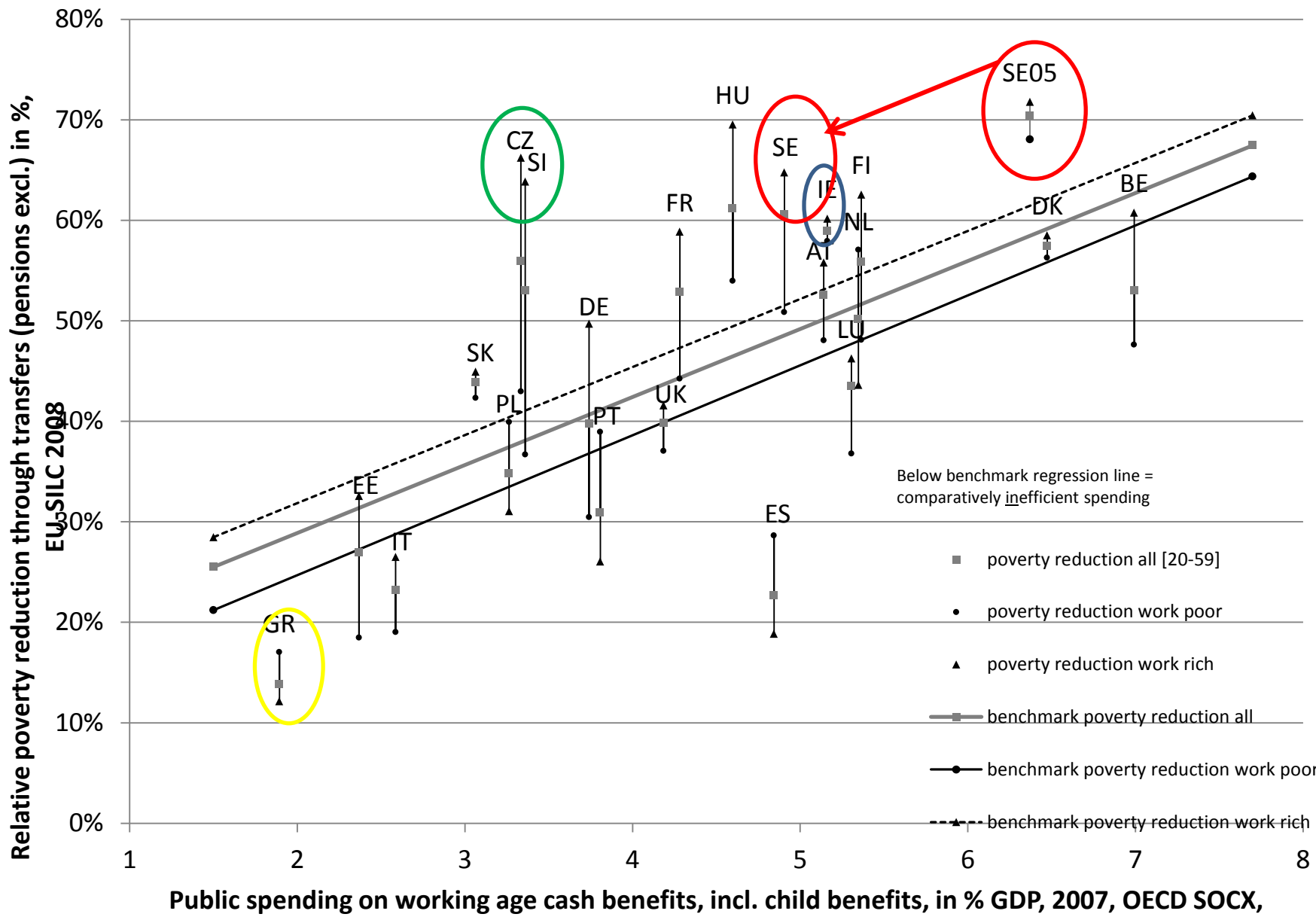


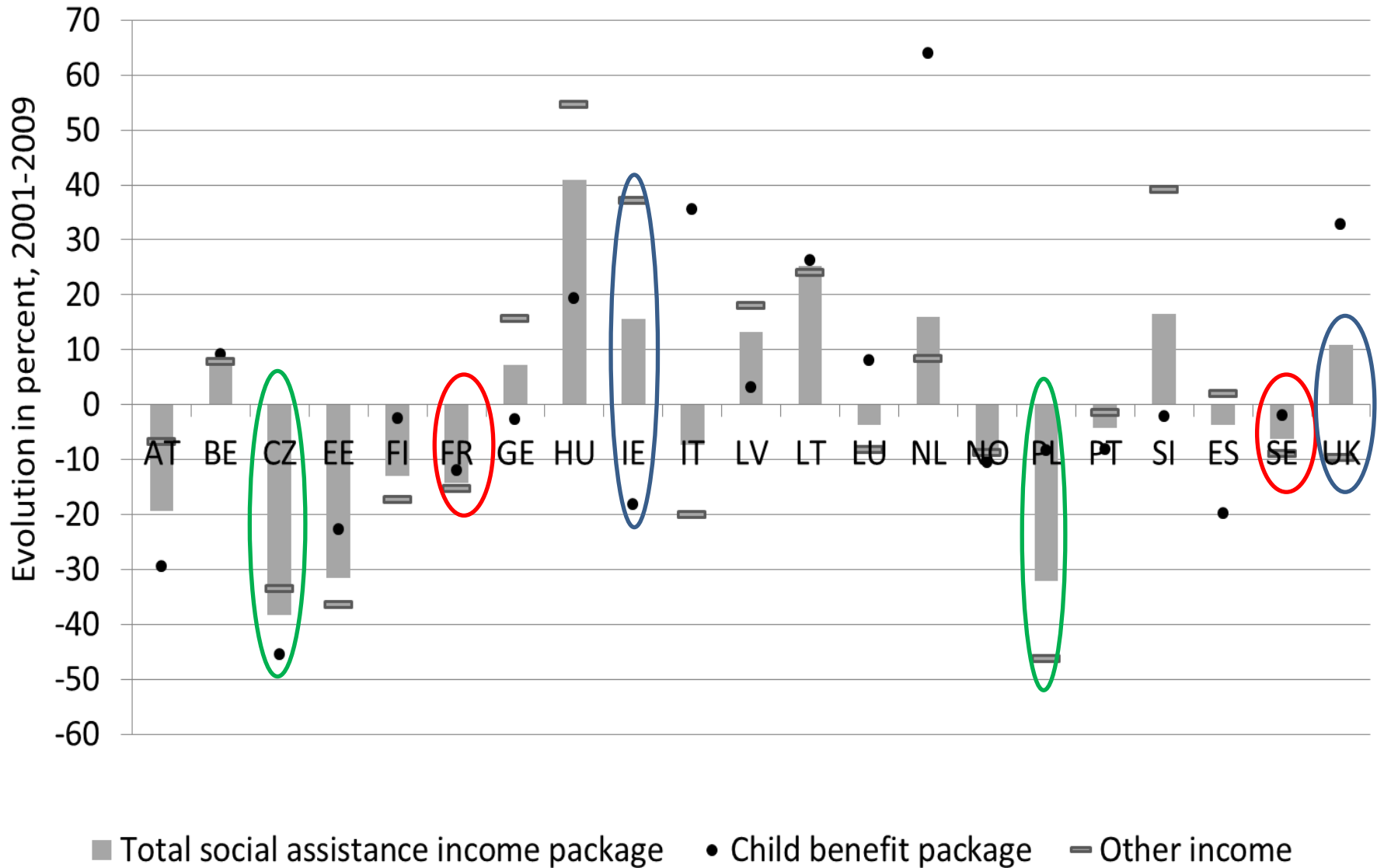
Figure 10.3. Relative poverty reduction and spending on cash benefits for working age households.



# Which hindrances in the virtuous circles?

- Who benefits from job growth?
- Poverty among the working poor
- In-work-poverty
- Pro-poorness of social protection
  - effort
  - efficiency
  - adequacy

### Benefit packages as % of poverty line





# Which hindrances in the virtuous circles?

- Different trajectories
- Pointing to convergence
- Irish exceptionalism
- Importance of social redistribution